

CONCEPT PLAN FOR: WALNUT GROVE TOWN CENTER

4TH DISTRICT, LAND LOT 175 & 198
 PARCELS WG010024 & WG010025
 1071 WALNUT GROVE PKWY
 WALNUT GROVE, GA. 30052
 WALTON COUNTY, GEORGIA

OWNER:

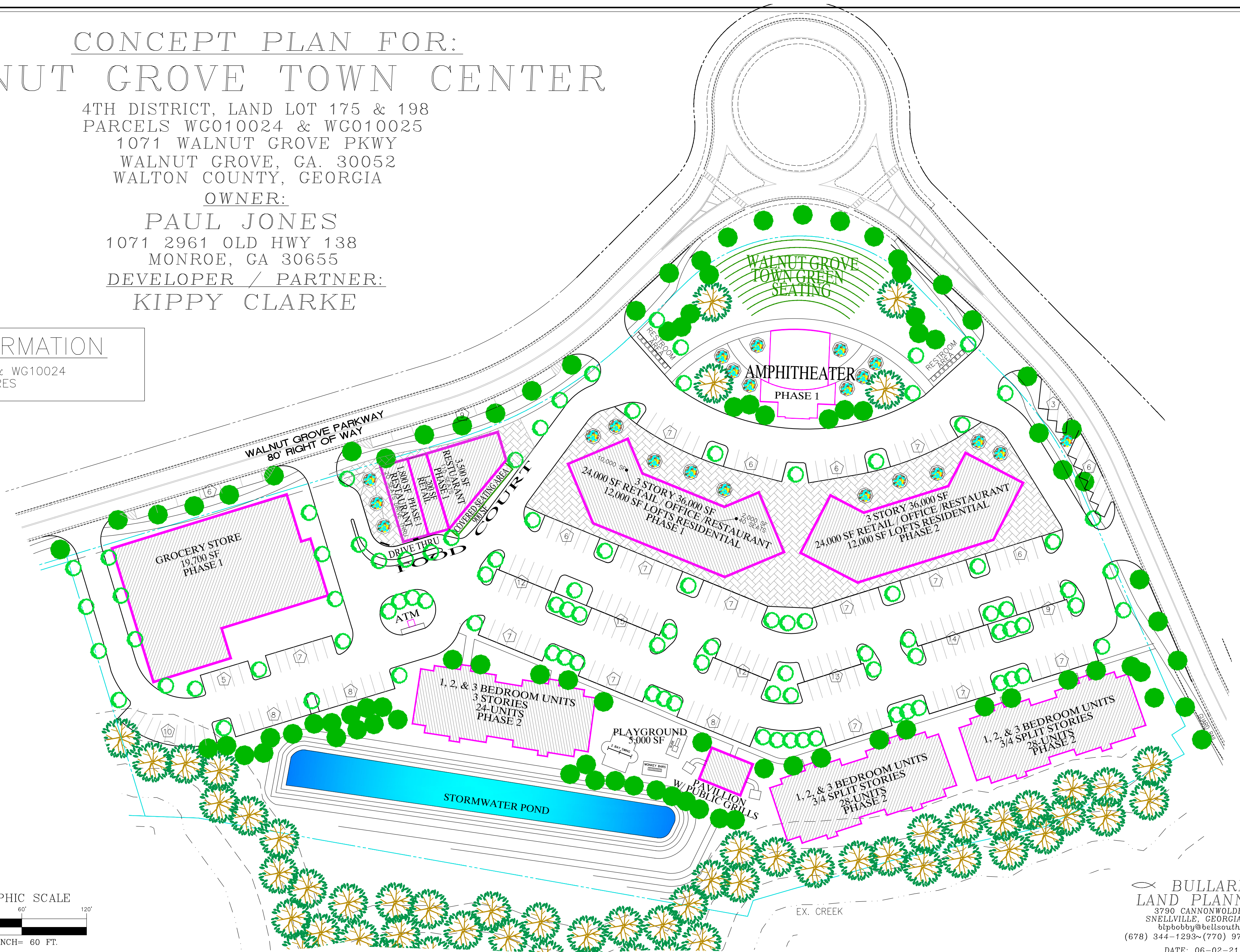
PAUL JONES
 1071 2961 OLD HWY 138
 MONROE, GA 30655

DEVELOPER / PARTNER:

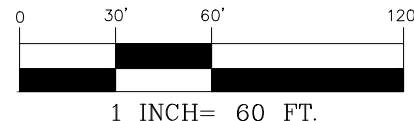
KIPPY CLARKE

SITE INFORMATION

PARCELS WG010025 & WG10024
 TOTAL AREA: 9.40 ACRES



GRAPHIC SCALE



BULLARD
 LAND PLANNING
 3790 CANNONWOLDE DR.
 SNELLVILLE, GEORGIA 30039
 blpbobby@bellsouth.net
 (678) 344-1293 ~ (770) 978-8857 FAX

DATE: 06-02-21